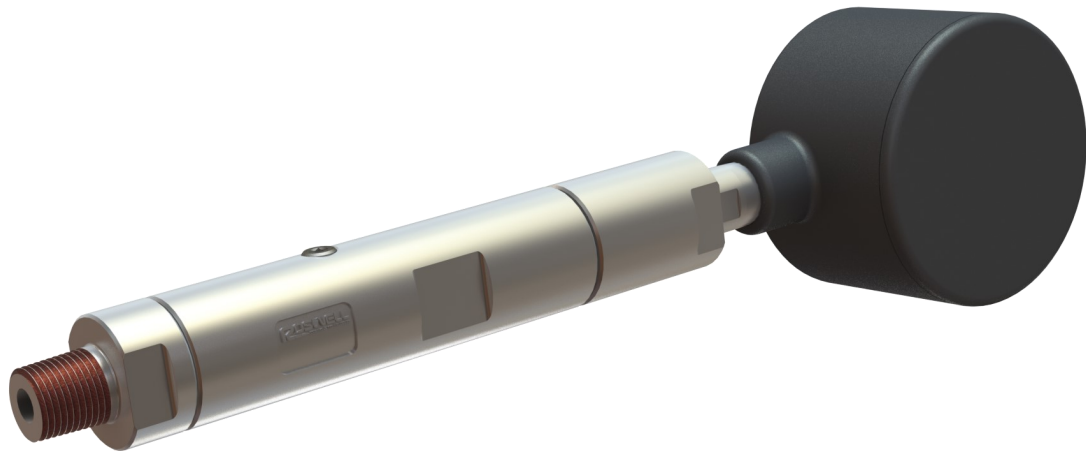


Specification Sheet

10k TEC Wellhead Outlet



Materials

Housing	17-4PH Stainless Steel
First Barrier	Metal to Metal Seal
Second Barrier	Glass to Metal Barrier

Mechanical

Temperature Rating	150 °C
Body Pressure Rating	10,000 psi
Top Connector	1/2" NPT

Wellhead Connections

1/8" TEC	3/8", 1/2", 3/4" NPT
1/4" TEC	3/8", 1/2", 3/4" NPT
4mm TEC	3/8", 1/2", 3/4" NPT

Electrical

Max. Voltage	250V
Max Current	7A
Max # Conductors	4

Roswell Downhole Technologies Inc.
1055 26th Street North East
Calgary, Alberta, Canada
T2A 6K8
www.RoswellDHT.com
info@RoswellDHT.com